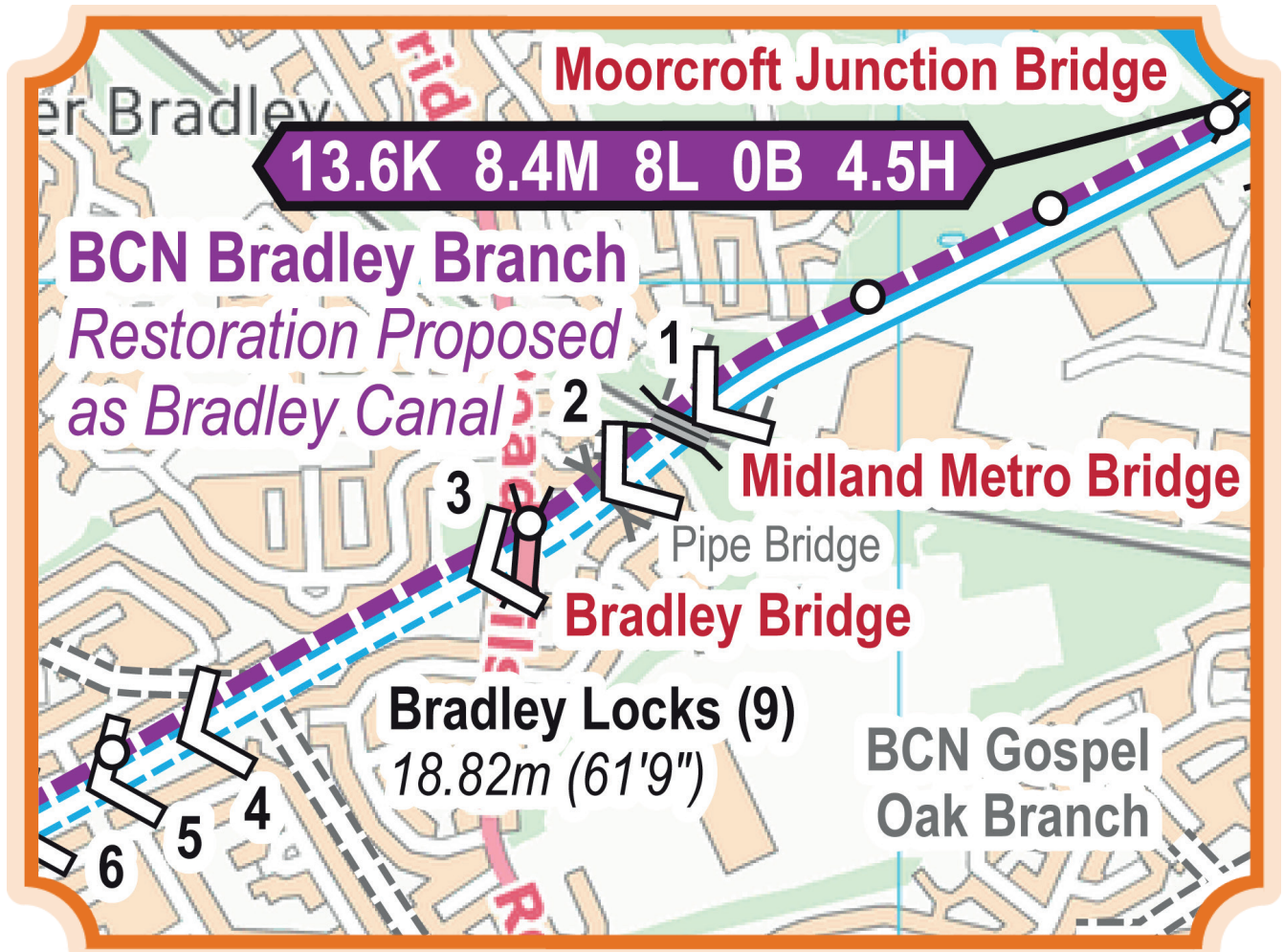




# WATERWAY ROUTES



## Cruising Map

of the

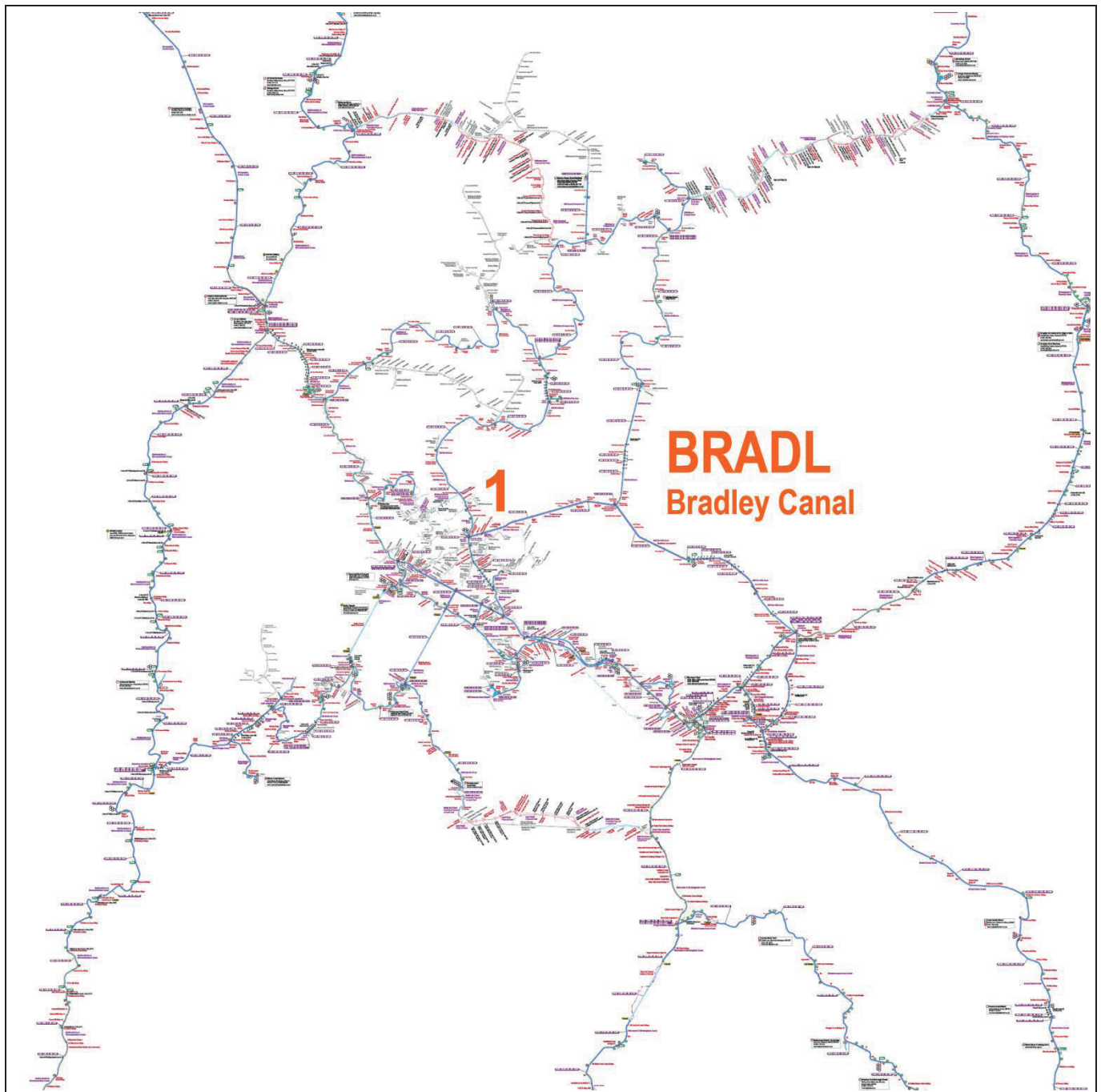
## Bradley Canal

including

**Moorcroft Junction**

**Bradley Locks**

**Former and Proposed Routes**



## Notes

1. The information is believed to be correct at the time of publication but changes are frequently made on the waterways and you should check before relying on this information.
2. We do not update the maps for short term changes such as winter lock closures for maintenance.
3. The information is provides “as is” and the Information Provider excludes all representations, warranties, obligations, and liabilities in relation to the Information to the maximum extent permitted by law. The Information Provider is not liable for any errors or omissions in the Information and shall not be liable for any loss, injury or damage of any kind caused by its use.



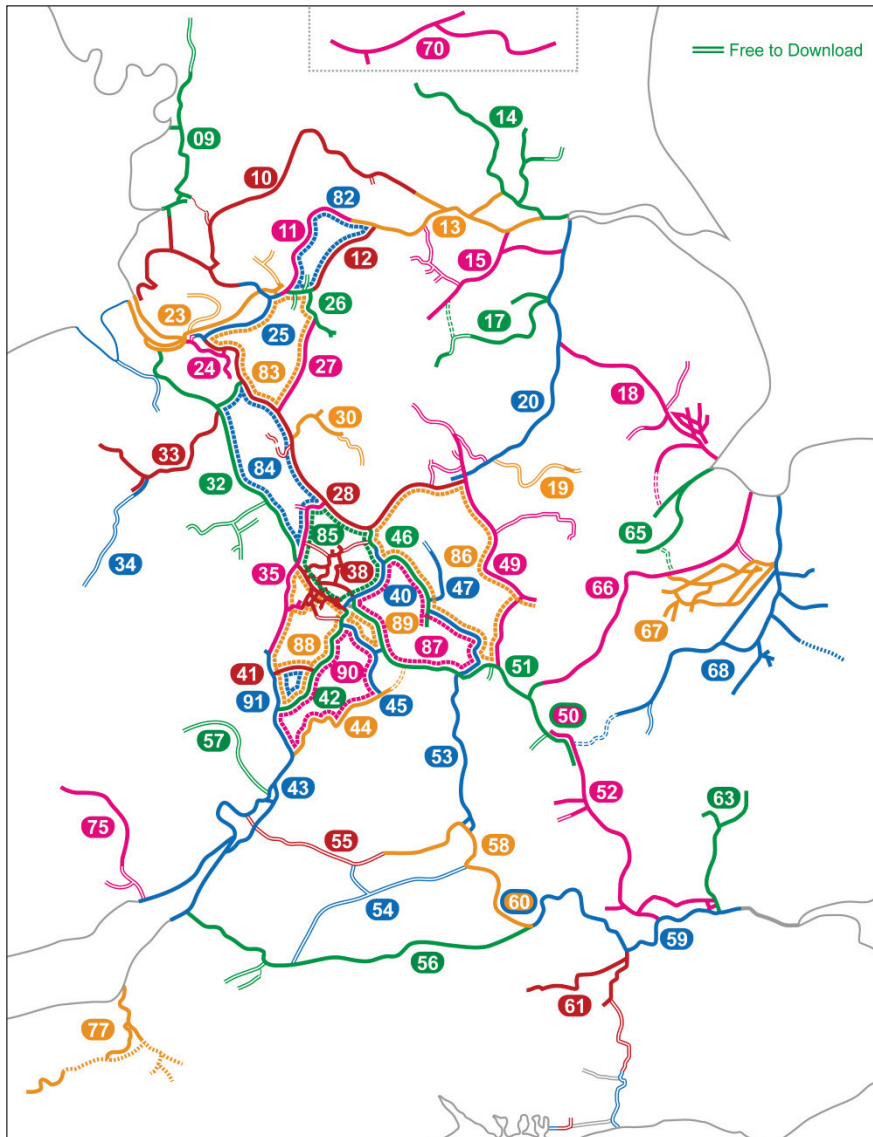
This is the **Summer 2025** edition of the map.  
See [www.waterwayroutes.co.uk/updates](http://www.waterwayroutes.co.uk/updates) for updating  
to the latest issue at a free or discounted price.

Contains OS data © Crown copyright and database right.  
All other work © **Waterway Routes**.  
**DO NOT** reuse information taken from these maps elsewhere.  
Licensed for personal use only. Business licences on request.



# Waterway Routes

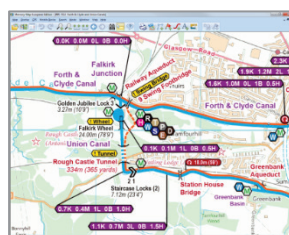
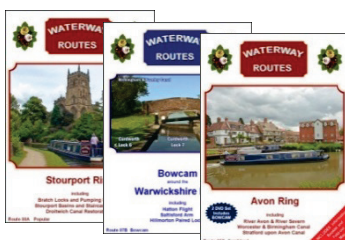
Maps and DVDs covering the canals and rivers of Britain



## Please Help

This map, and maps for over 50 restoration projects, are free to download. The cost of producing these free maps is covered by sales of Maps and DVDs for the open waterways.

Please consider making a purchase from my website to keep these maps free and support the restoration projects.



[www.waterwayroutes.co.uk](http://www.waterwayroutes.co.uk)

### Complete

#### 01 England & Wales

#### Rings

- 82 South Pennine
- 83 Cheshire
- 84 Four Counties
- 85 Black Country
- 86 East Midlands
- 87 Warwickshire
- 88 Stourport
- 89 Birmingham Mini
- 90 Avon
- 91 Mid Worcestershire

#### Canals and Rivers

- 09 Lancaster
- 10 Leeds & Liverpool
- 11 Rochdale
- 12 Huddersfield
- 13 Aire & Calder and Calder & Hebble
- 14 River Ouse and Tributaries
- 15 Sheffield & South Yorkshire
- 17 Chesterfield
- 18 Fossdyke & Witham and Tributaries
- 19 Grantham
- 20 River Trent
- 23 Manchester Ship and River Mersey
- 24 River Weaver
- 25 Bridgewater
- 26 Ashton and Peak Forest
- 27 Macclesfield
- 28 Trent & Mersey
- 30 Caldon
- 31 Shrewsbury and Newport Canals
- 32 Shropshire Union
- 33 Llangollen
- 34 Montgomery
- 35 Staffs & Worcester
- 38 BCN
- 40 Birmingham & Fazeley
- 41 Droitwich
- 42 Worcester & Birmingham
- 43 River Severn and G&S
- 44 River Avon (Stratford)
- 45 Stratford upon Avon
- 46 Coventry
- 47 Ashby
- 49 Grand Union (Leicester)
- 50 Grand Union (All)
- 51 Grand Union (North)
- 52 Grand Union (South)
- 53 Oxford
- 54 Wilts & Berks
- 55 Cotswold
- 56 Kennet & Avon
- 57 Herefordshire & Gloucestershire
- 58 River Thames (Upper)
- 59 River Thames (Lower)
- 60 River Thames (All)
- 61 River Wey and Basingstoke
- 63 Lee & Stort Navigations
- 65 Rivers Welland, Glen and Fens Link
- 66 River Nene
- 67 Middle Level Navigations
- 68 River Great Ouse and Tributaries
- 70 Forth & Clyde and Union
- 75 Monmouth & Brecon
- 77 Bridgewater & Taunton and Grand Western

## Waterway Information

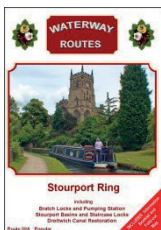
Waterway	Section	Maximum Length	Maximum Width	Speed Limit	Navigation Authority
Bradley Canal	All	21.62m (70'11")	2.24m (7'04")	6.4 kph (4 mph)	CRT
	Note the Bradley Canal is derelict and proposed for restoration. This information has been estimated for when the canal has been restored.				

## Further Information

CRT HQ	Canal & River Trust Headquarters  National Waterways Museum, South Pier Road, Ellesmere Port, CH65 4FW	Phone: 0303 040 4040  Email: <a href="mailto:customer.services@canalrivertrust.org.uk">customer.services@canalrivertrust.org.uk</a>  Web: <a href="http://www.canalrivertrust.org.uk">www.canalrivertrust.org.uk</a>
-----------	--	--

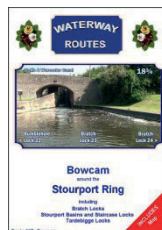
## DVDs

Look out for our great range of DVDs to provide more information for planning your journey.



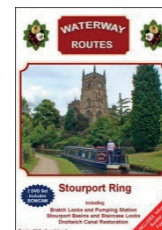
### Popular

Like a television programme following a cruise along the waterway



### Bowcam

A forward facing camera, running all the time, and speeded up for a little fun.



### Combined

Both Popular and Bowcam in one box saving money on the DVDs (and the postage)

See the whole range on our website at [www.waterwayroutes.co.uk](http://www.waterwayroutes.co.uk)

## WATER

	Navigable - Tidal
	Navigable - River
	Navigable - Canal
	Navigable - Canal in Tunnel
	Un-navigable - Abandoned - Dry
	Un-navigable - Abandoned - Wet
	Un-navigable - Abandoned - Tunnel
	Un-navigable - Restoration Proposed - Dry
	Un-navigable - Restoration Proposed - Wet
	Un-navigable - Restoration Proposed - Tunnel
	Un-navigable - Proposed New - Dry
	Un-navigable - Proposed New - Wet
	Un-navigable - Proposed New - Tunnel

## TOWPATH

	Walkable Towpath (alongside waterway)
	Walkable Towpath in Tunnel
	Walkable Other Path (where no towpath)
	Walkable Linking Path (elsewhere)
	Cyclable Towpath (alongside waterway)
	Cyclable Towpath in Tunnel
	Cyclable Other Path (where no towpath)
	Cyclable Linking Path (elsewhere)
	Un-walkable Towpath - Abandoned
	Un-walkable Towpath in Tunnel - Abandoned
	Un-walkable Towpath - Restoration Proposed
	Un-walkable Towpath - Proposed New or Under Construction
	Un-walkable Towpath in Tunnel - Proposed New or Under Construction

## LOCKS etc.

	Navigable Lock (H means handspike required, L means lengthened)
	Navigable Lock (circle indicates control side)
	Navigable Lock (with tail bridge)
	Navigable Lock (paired)
	Navigable Lock (staircase)
	Un-navigable Lock - Abandoned
	Un-navigable Lock - Restoration Proposed
	Un-navigable Lock - Proposed New
	Guillotine Gate (on detailed insets)
	Guillotine Gate (circle indicates control side on detailed insets)
	Weir
	Inclined Plane - Abandoned

## BRIDGES etc.

	Bridge - Existing
	Bridge - Removed
	Bridge - Proposed New
	Bridge - Towpath
	Pipe Bridge
	Tunnel
	Aqueduct
	Building (over canal)

## OTHER

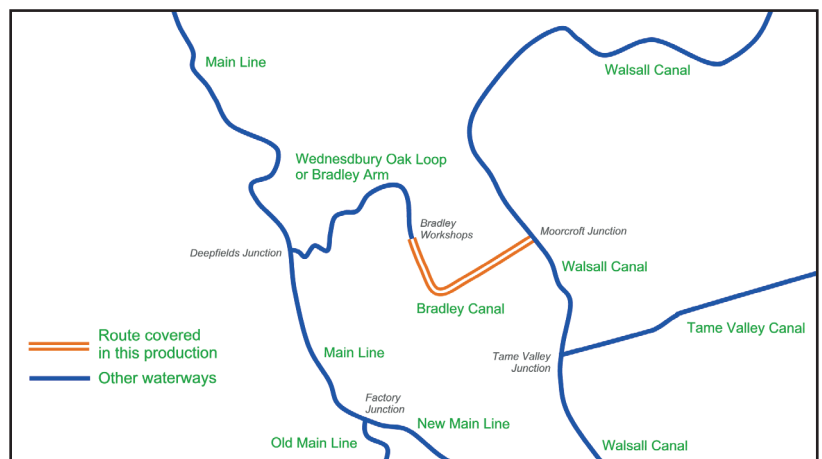
	Ferry Wires (may require lowering for navigation)
	Access Point (to towpath)
	Point of Interest

## NOTES

- It is the colour of the symbol (not the text) which identifies Existing (black) / Abandoned (grey) / New (red)
- Services at Boatyards and Marinas will usually require payment. They may be discounted or free for residents and some may only be available to residents. Contact them for details.
- The number of hours cruising time cannot be precise and should only be used for an indication of journey time. No allowance is made for queuing for locks, which may happen, especially in the summer. No allowance is made for stops for water, shopping, meals, etc. Travelling upstream on a river or the Llangollen Canal will be slower, while travelling downstream may be a little quicker.

## SYMBOLS

	Winding Point (full length for navigation unless marked)
	No Winding / No Acute Angle Turn (use next winding point and return)
	Boatyard or Marina - Business
	Boatyard or Marina - Trust / Society
	Chandlery
	Diesel
	Elsan Emptying
	Gas - Calor
	Gas - Not Calor
	Hire Base - Weekly / Weekend
	Hire Base - Day
	Pump Out
	Refuse Disposal
	Recycling Point
	Shower
	Toilet
	Water
	Information (see message box)
	Navigation Advice (see message box)
	Navigation Advice (see symbol text)
	Mooring - Signed - Maximum 14 days
	Mooring - Maximum days as specified
	Mooring - Maximum hours as specified
	Mooring Area Limits (see message box)
	Mooring in designated Mooring Area - Maximum days in summer (winter in brackets)
	Mooring designated for disabled boaters
	Mooring with payment required
	Mooring for patrons (of pub, restaurant etc.)
	Mooring Overnight Only
	Mooring only with lock keeper's permission
	Mooring for members of Friends of the River Nene only (on River Nene)
	Mooring for members of Great Ouse Boating Association only (on River Great Ouse and tributaries)
	Mooring - Unsigned but appears suitable - Maximum 14 days
	Mooring - Unsigned but appears suitable - Maximum time as specified
	Speed Limit (miles per hour and kilometres per hour) applicable to side of sign shown
	Information based on a zero point (which is usually at one end of the waterway)
	K = Kilometres from the zero point
	M = Miles from the zero point
	L = Number of Locks from zero point
	B = Number of Bridges which are moveable (lift, swing etc.) from zero point
	(normally left closed and low enough to require opening for a narrow boat)
	H = Number of hours cruising from zero point
	Scale: Light blue Ordnance Survey grid lines are 1km squares (approximately 2/3 mile)



Paul Balmer

trading as

**WATERWAY ROUTES**

10 Bude Close  
Nailsea  
Bristol  
BS48 2FQ

Phone: 07961 701 702

Email: [info@waterwayroutes.co.uk](mailto:info@waterwayroutes.co.uk)

Web: [www.waterwayroutes.co.uk](http://www.waterwayroutes.co.uk)