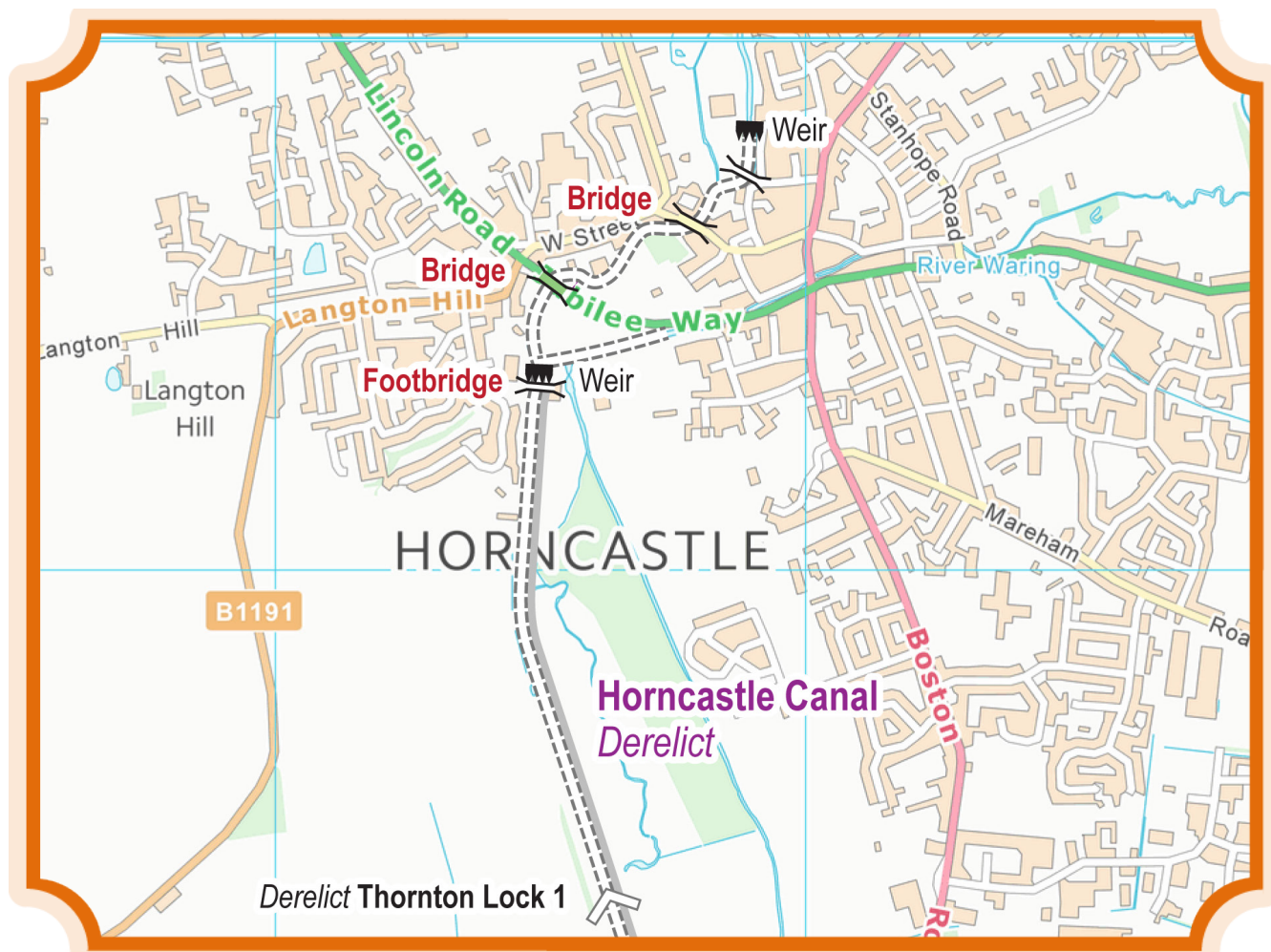
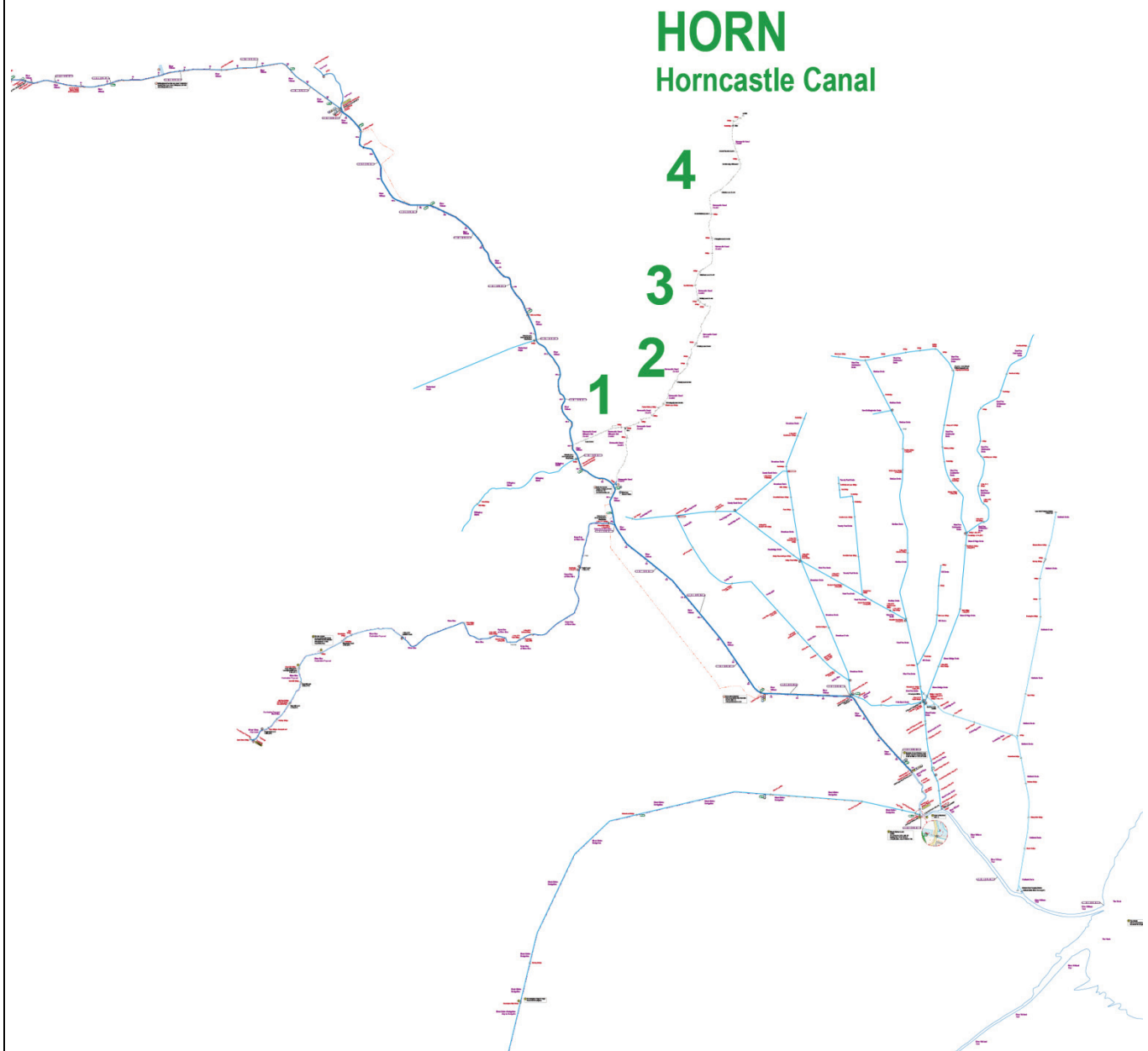




WATERWAY ROUTES



Cruising Map of the Horncastle Canal including Derelict Horncastle Canal Gibson's Cut Horncastle



Notes

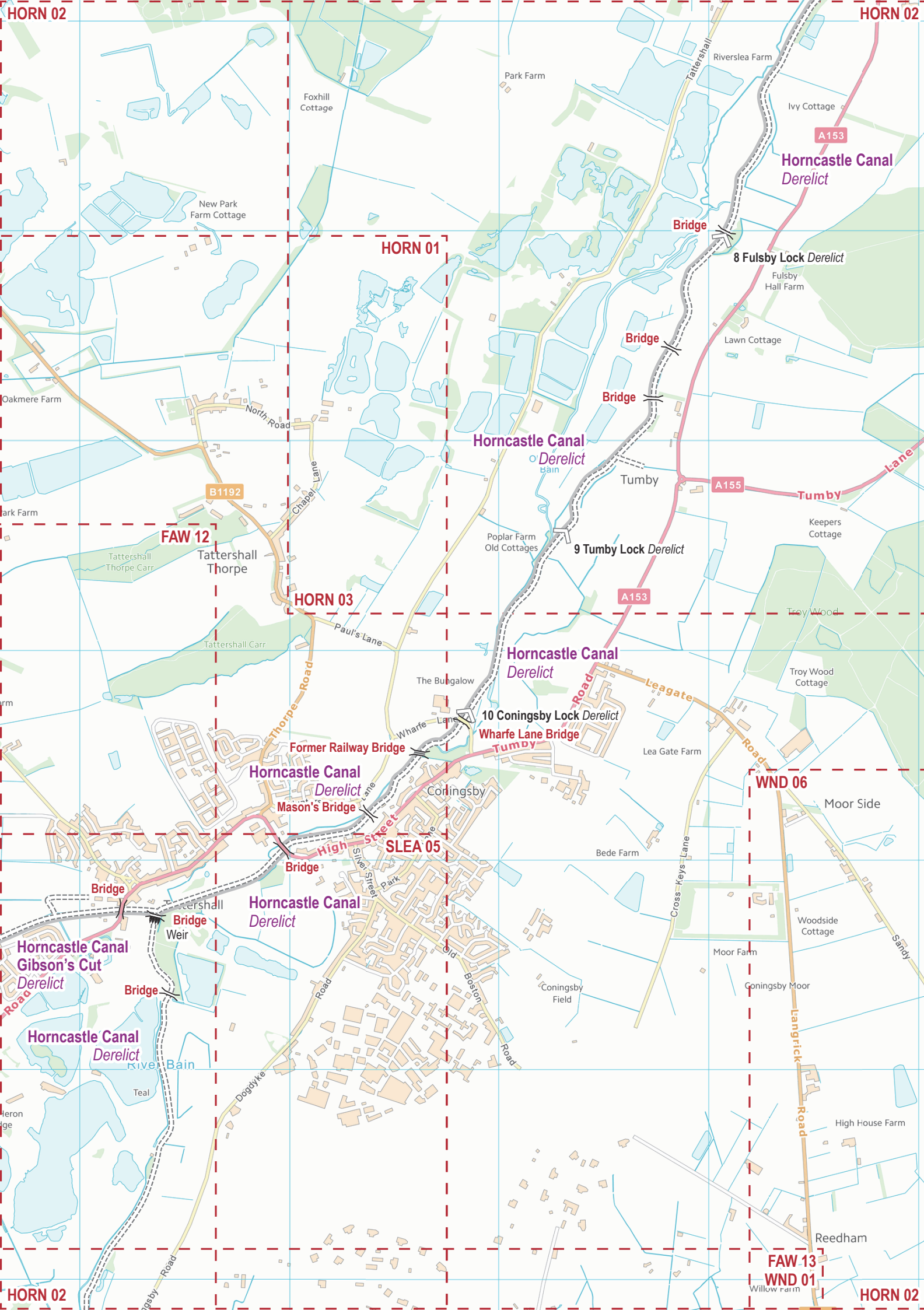
1. The information is believed to be correct at the time of publication but changes are frequently made on the waterways and you should check before relying on this information.
2. We do not update the maps for short term changes such as winter lock closures for maintenance.
3. The information is provides “as is” and the Information Provider excludes all representations, warranties, obligations, and liabilities in relation to the Information to the maximum extent permitted by law. The Information Provider is not liable for any errors or omissions in the Information and shall not be liable for any loss, injury or damage of any kind caused by its use.

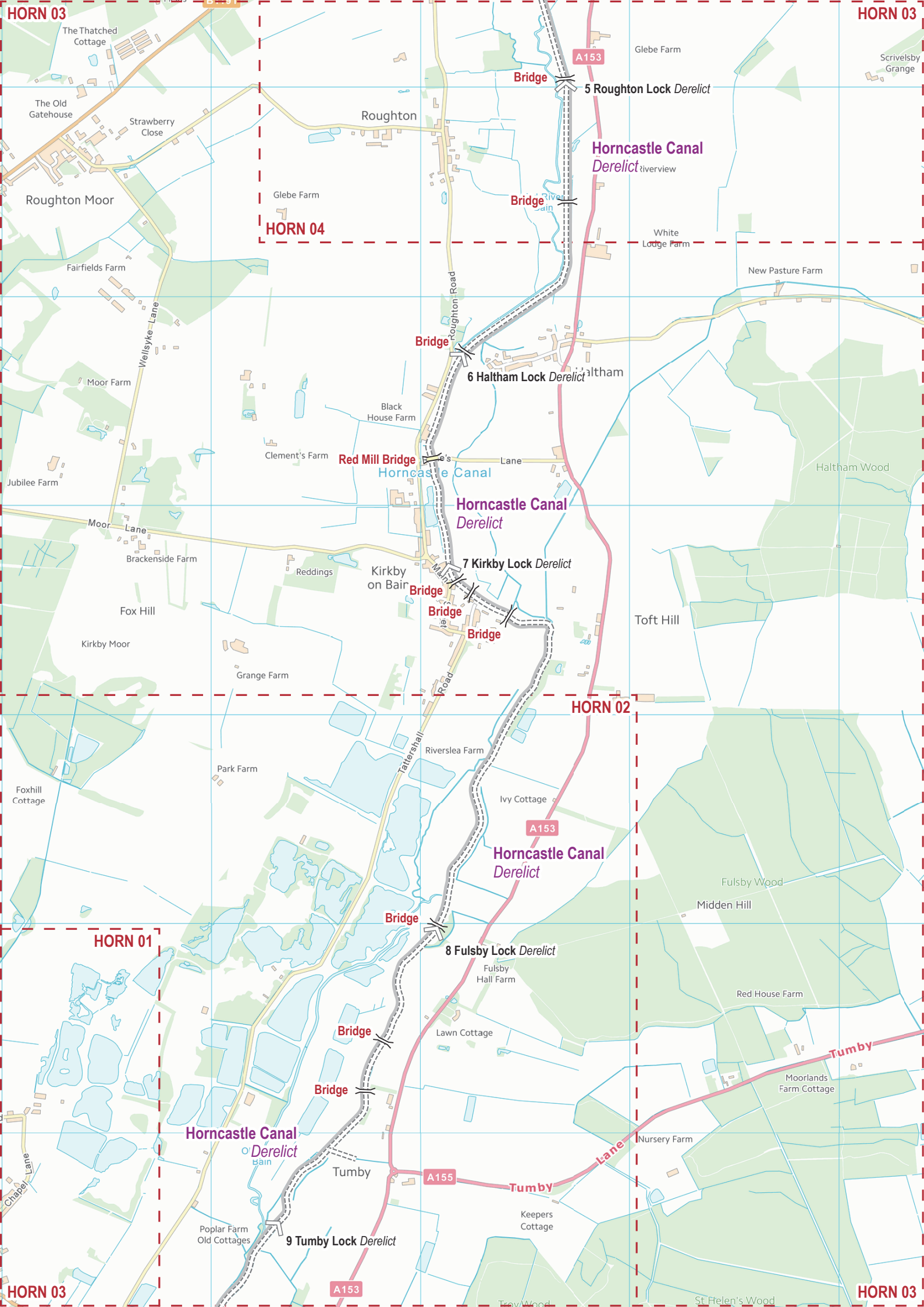


This is the **April 2024** edition of the map.
See www.waterwayroutes.co.uk/updates for updating to the latest monthly issue at a free or discounted price.
Contains OS data © Crown copyright and database right.
All other work © **Waterway Routes**.
DO NOT reuse information taken from these maps elsewhere.
Licensed for personal use only. Business licences on request.

B Belle Isle Marina
Dogdyke, Coningsby, LN4 4UU
01526 342 124
www.belleislemarina.co.uk

Mooring
Closed in winter.





HORN 03

HORN 03

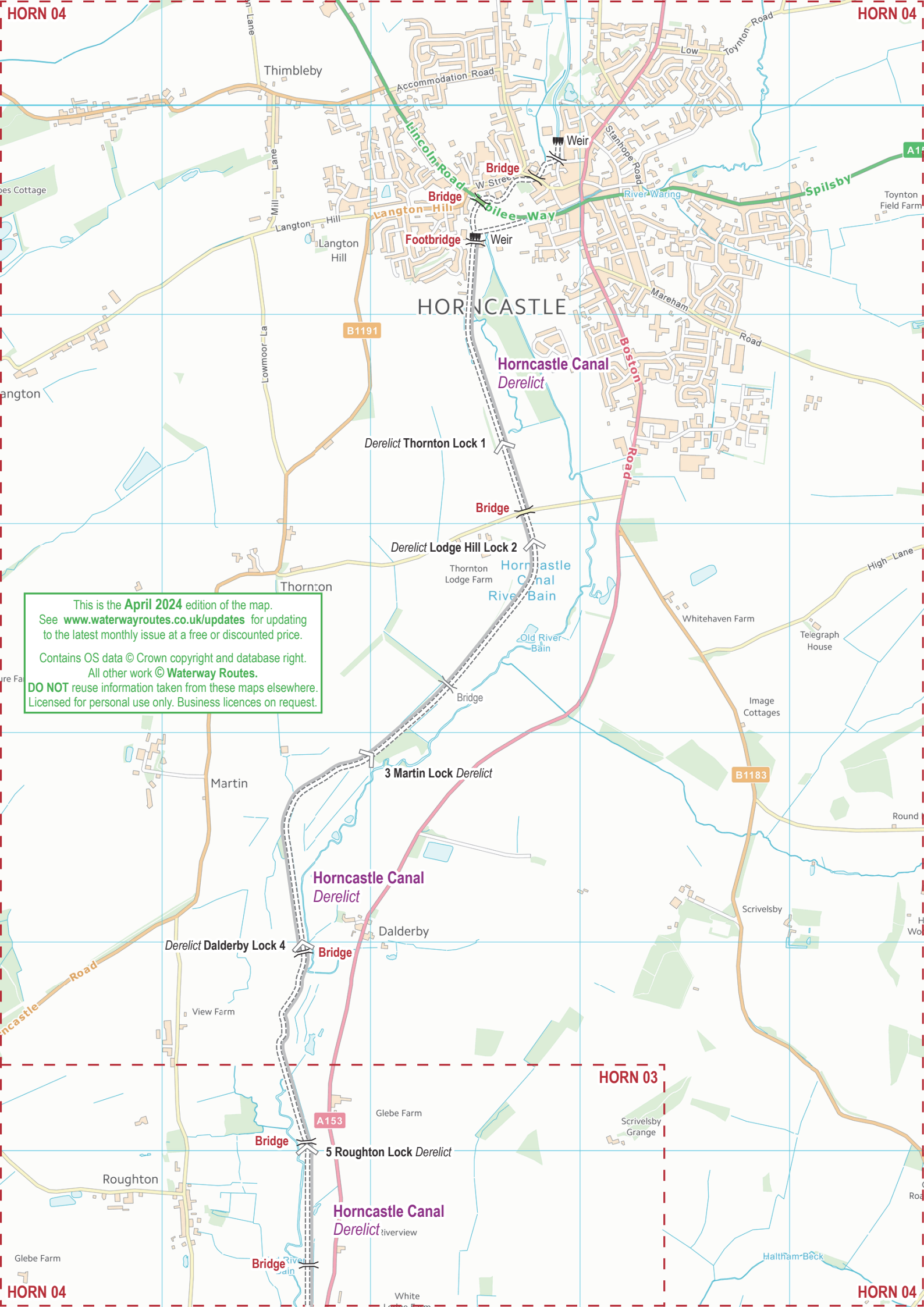
HORN 04

HORN 02

HORN 01

HORN 03

HORN 03



This is the **April 2024** edition of the map.
See www.waterwayroutes.co.uk/updates for updating
to the latest monthly issue at a free or discounted price.

Contains OS data © Crown copyright and database right.
All other work © **Waterway Routes**.
DO NOT reuse information taken from these maps elsewhere.
Licensed for personal use only. Business licences on request.

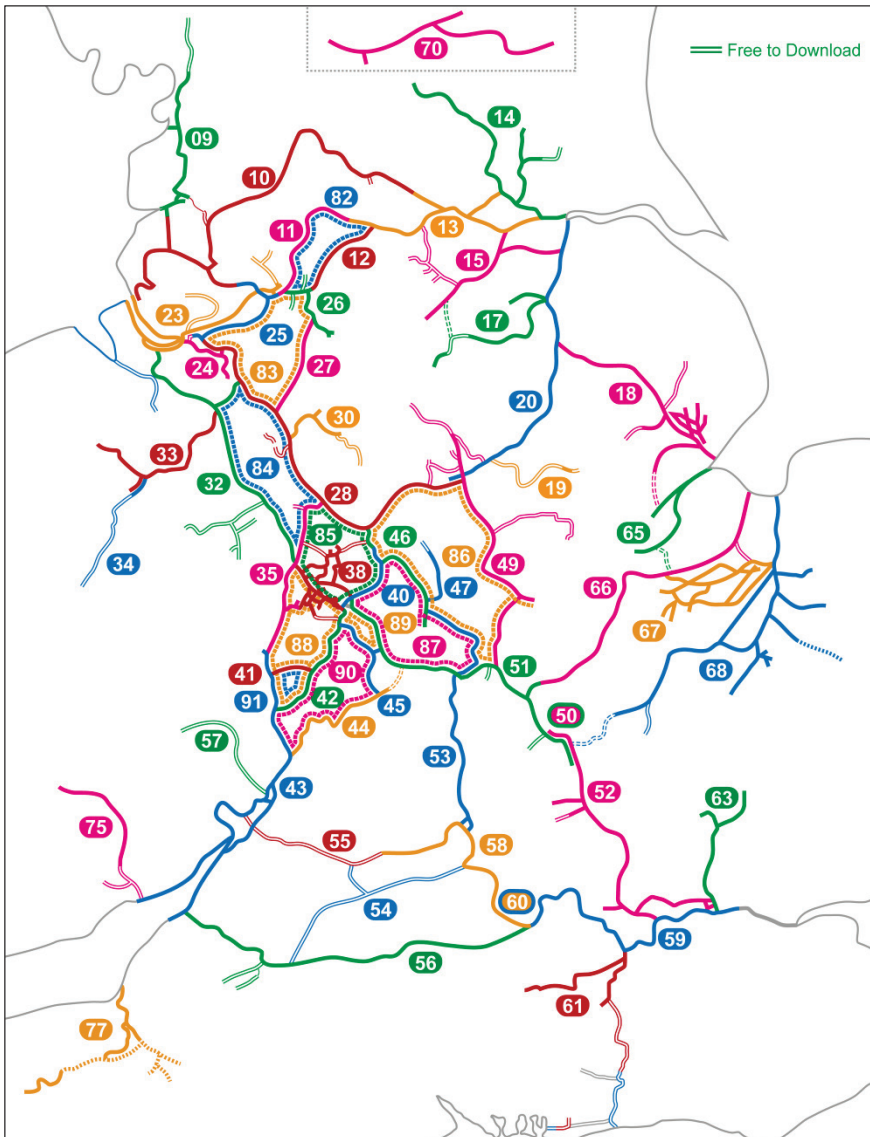
HORN 03

HORN 04

HORN 04

Waterway Routes

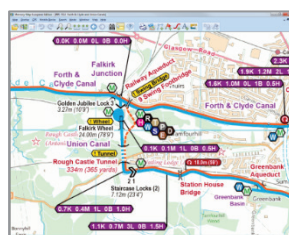
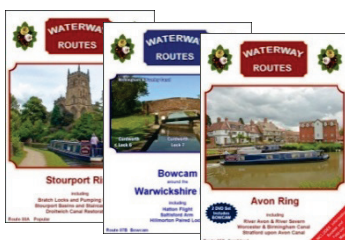
Maps and DVDs covering the canals and rivers of Britain



Please Help

This map, and maps for over 50 restoration projects, are free to download. The cost of producing these free maps is covered by sales of Maps and DVDs for the open waterways.

Please consider making a purchase from my website to keep these maps free and support the restoration projects.



www.waterwayroutes.co.uk

Complete

01 England & Wales

Rings

- 82 South Pennine
- 83 Cheshire
- 84 Four Counties
- 85 Black Country
- 86 East Midlands
- 87 Warwickshire
- 88 Stourport
- 89 Birmingham Mini
- 90 Avon
- 91 Mid Worcestershire

Canals and Rivers

- 09 Lancaster
- 10 Leeds & Liverpool
- 11 Rochdale
- 12 Huddersfield
- 13 Aire & Calder and Calder & Hebble
- 14 River Ouse and Tributaries
- 15 Sheffield & South Yorkshire
- 17 Chesterfield
- 18 Fossdyke & Witham and Tributaries
- 19 Grantham
- 20 River Trent
- 23 Manchester Ship and River Mersey
- 24 River Weaver
- 25 Bridgewater
- 26 Ashton and Peak Forest
- 27 Macclesfield
- 28 Trent & Mersey
- 30 Caldon
- 31 Shrewsbury and Newport Canals
- 32 Shropshire Union
- 33 Llangollen
- 34 Montgomery
- 35 Staffs & Worcester
- 38 BCN
- 40 Birmingham & Fazeley
- 41 Droitwich
- 42 Worcester & Birmingham
- 43 River Severn and G&S
- 44 River Avon (Stratford)
- 45 Stratford upon Avon
- 46 Coventry
- 47 Ashby
- 49 Grand Union (Leicester)
- 50 Grand Union (All)
- 51 Grand Union (North)
- 52 Grand Union (South)
- 53 Oxford
- 54 Wilts & Berks
- 55 Cotswold
- 56 Kennet & Avon
- 57 Herefordshire & Gloucestershire
- 58 River Thames (Upper)
- 59 River Thames (Lower)
- 60 River Thames (All)
- 61 River Wey and Basingstoke
- 63 Lee & Stort Navigations
- 65 Rivers Welland, Glen and Fens Link
- 66 River Nene
- 67 Middle Level Navigations
- 68 River Great Ouse and Tributaries
- 70 Forth & Clyde and Union
- 75 Monmouth & Brecon
- 77 Bridgewater & Taunton and Grand Western

Waterway Information

Waterway	Section	Maximum Length	Maximum Width	Speed Limit	Navigation Authority
Fosdyke & Witham Navigation	Non Tidal Waters	22.86m (75'0")	4.65m (15'3")	6.4 kph (4 mph)	CRT

Navigation Authority

CRT HQ	Canal & River Trust Headquarters First Floor North, Station House, 500 Elder Gate, Milton Keynes, MK9 1BB	Phone: 0303 040 4040 Email: customer.services@canalrivertrust.org.uk Web: www.canalrivertrust.org.uk
-----------	--	--

WATER

	Navigable - Tidal
	Navigable - River
	Navigable - Canal
	Navigable - Canal in Tunnel
	Un-navigable - Abandoned - Dry
	Un-navigable - Abandoned - Wet
	Un-navigable - Abandoned - Tunnel
	Un-navigable - Restoration Proposed - Dry
	Un-navigable - Restoration Proposed - Wet
	Un-navigable - Restoration Proposed - Tunnel
	Un-navigable - Proposed New - Dry
	Un-navigable - Proposed New - Wet
	Un-navigable - Proposed New - Tunnel

TOWPATH

	Walkable Towpath (alongside waterway)
	Walkable Towpath in Tunnel
	Walkable Other Path (where no towpath)
	Walkable Linking Path (elsewhere)
	Cyclable Towpath (alongside waterway)
	Cyclable Towpath in Tunnel
	Cyclable Other Path (where no towpath)
	Cyclable Linking Path (elsewhere)
	Un-walkable Towpath - Abandoned
	Un-walkable Towpath in Tunnel - Abandoned
	Un-walkable Towpath - Restoration Proposed
	Un-walkable Towpath in Tunnel - Restoration Proposed
	Un-walkable Towpath - Proposed New
	Un-walkable Towpath in Tunnel - Proposed New

LOCKS etc.

	Navigable Lock
	Navigable Lock (circle indicates control side)
	Navigable Lock (with tail bridge)
	Navigable Lock (paired)
	Navigable Lock (staircase)
	Un-navigable Lock - Abandoned
	Un-navigable Lock - Restoration Proposed
	Un-navigable Lock - Proposed New
	Guillotine Gate (on detailed insets)
	Guillotine Gate (circle indicates control side - on detailed insets)
	Weir
	Inclined Plane - Abandoned

BRIDGES etc.

	Bridge - Existing
	Bridge - Removed
	Bridge - Proposed New
	Bridge - Towpath
	Pipe Bridge
	Tunnel
	Aqueduct
	Building (over canal)

OTHER

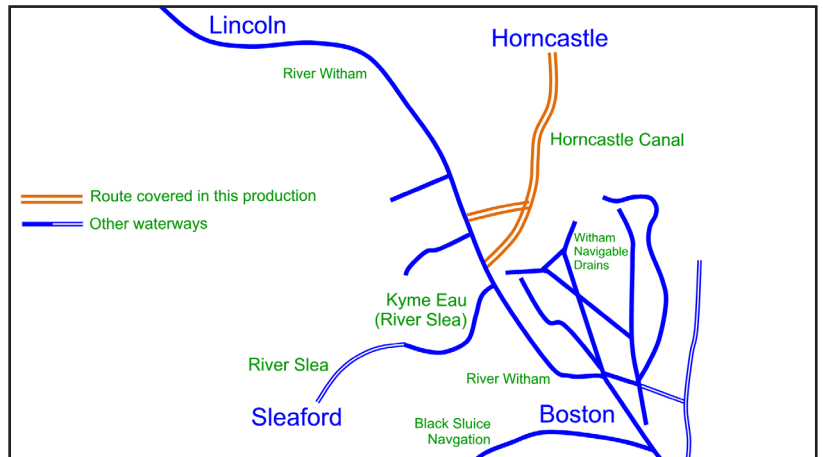
	Ferry Wires (may require lowering for navigation)
	Access Point (to towpath)
	Point of Interest

NOTES

1. It is the colour of the symbol (not the text) which identifies Existing (black) / Abandoned (grey) / New (red)
2. Services at Boatyards and Marinas will usually require payment. They may be discounted or free for residents and some may only be available to residents. Contact them for details.
3. The number of hours cruising time cannot be precise and should only be used for an indication of journey time. No allowance is made for queuing for locks, which may happen, especially in the summer. No allowance is made for stops for water, shopping, meals, etc. Travelling upstream on a river or the Llangollen Canal will be slower, while travelling downstream may be a little quicker.

SYMBOLS

	Winding Point (full length for navigation unless marked)
	No Winding / No Acute Angle Turn (use next winding point and return)
	Boatyard or Marina - Business
	Boatyard or Marina - Trust / Society
	Chandlery
	Diesel
	Elsan Emptying
	Gas - Calor
	Gas - Not Calor
	Hire Base - Weekly / Weekend
	Hire Base - Day
	Pump Out
	Refuse Disposal
	Recycling Point
	Shower
	Toilet
	Water
	Information (see message box)
	Navigation Advice (see message box)
	Navigation Advice (see symbol text)
	Mooring - Signed - Maximum 14 days
	Mooring - Maximum days as specified
	Mooring - Maximum hours as specified
	Mooring Area Limits (see message box)
	Moorings in designated Mooring Area - Maximum days in summer (winter in brackets)
	Mooring designated for disabled boaters
	Mooring with payment required
	Mooring for patrons (of pub, restaurant etc.)
	Mooring Overnight Only
	Mooring only with lock keeper's permission
	Moorings for members of Friends of the River Nene only (on River Nene)
	Moorings for members of Great Ouse Boating Association only (on River Great Ouse and tributaries)
	Mooring - Unsigned but appears suitable - Maximum 14 days
	Mooring - Unsigned but appears suitable - Maximum hours as specified
	Speed Limit (miles per hour and kilometres per hour) applicable to side of sign shown
	Information based on a zero point (which is usually at one end of the waterway) K = Kilometres from the zero point M = Miles from the zero point L = Number of Locks from zero point B = Number of Bridges which are moveable (lift, swing etc.) from zero point (normally left closed and low enough to require opening for a narrow boat) H = Number of hours cruising from zero point
	Scale: Light blue Ordnance Survey grid lines are 1km squares (approximately 2/3 mile)



Paul Balmer
trading as
WATERWAY ROUTES

10 Bude Close
Nailsea
Bristol
BS48 2FQ

Phone: 07961 701 702
Email: info@waterwayroutes.co.uk
Web: www.waterwayroutes.co.uk